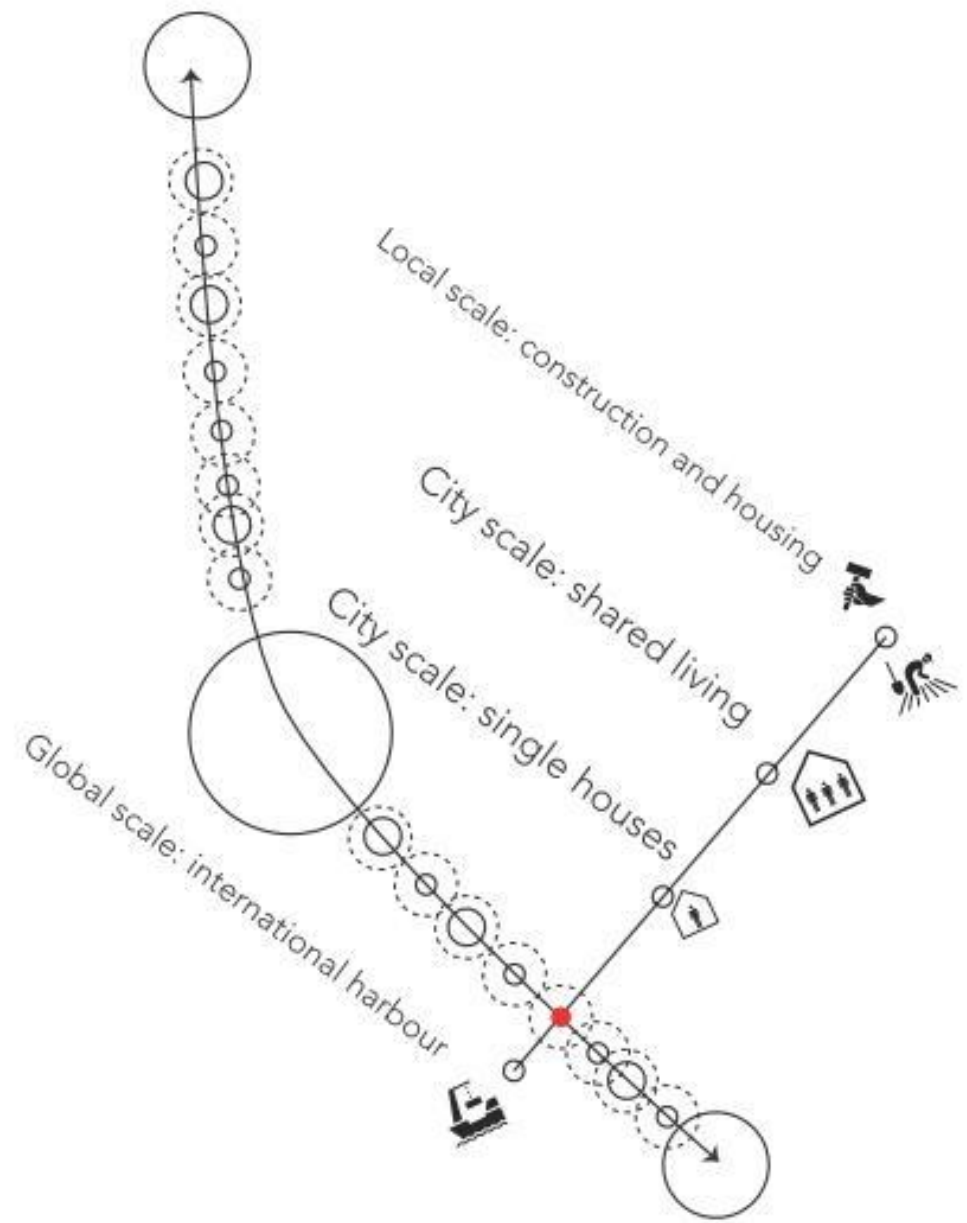


Docomomo International Workshop 2016  
Group 6 - Centro do Beato

Tutors  
João Pedro Falcão  
Miguel Braz  
Filipa Mourão

Ágnes Sebestyén  
Carla Goncalves  
Deborah Wray  
Elissabetta Matarazzo  
Gökhan Bayraktar  
Guido Martin  
Ito Takaya  
Waeovichian Abhichartvorapan





## Strong

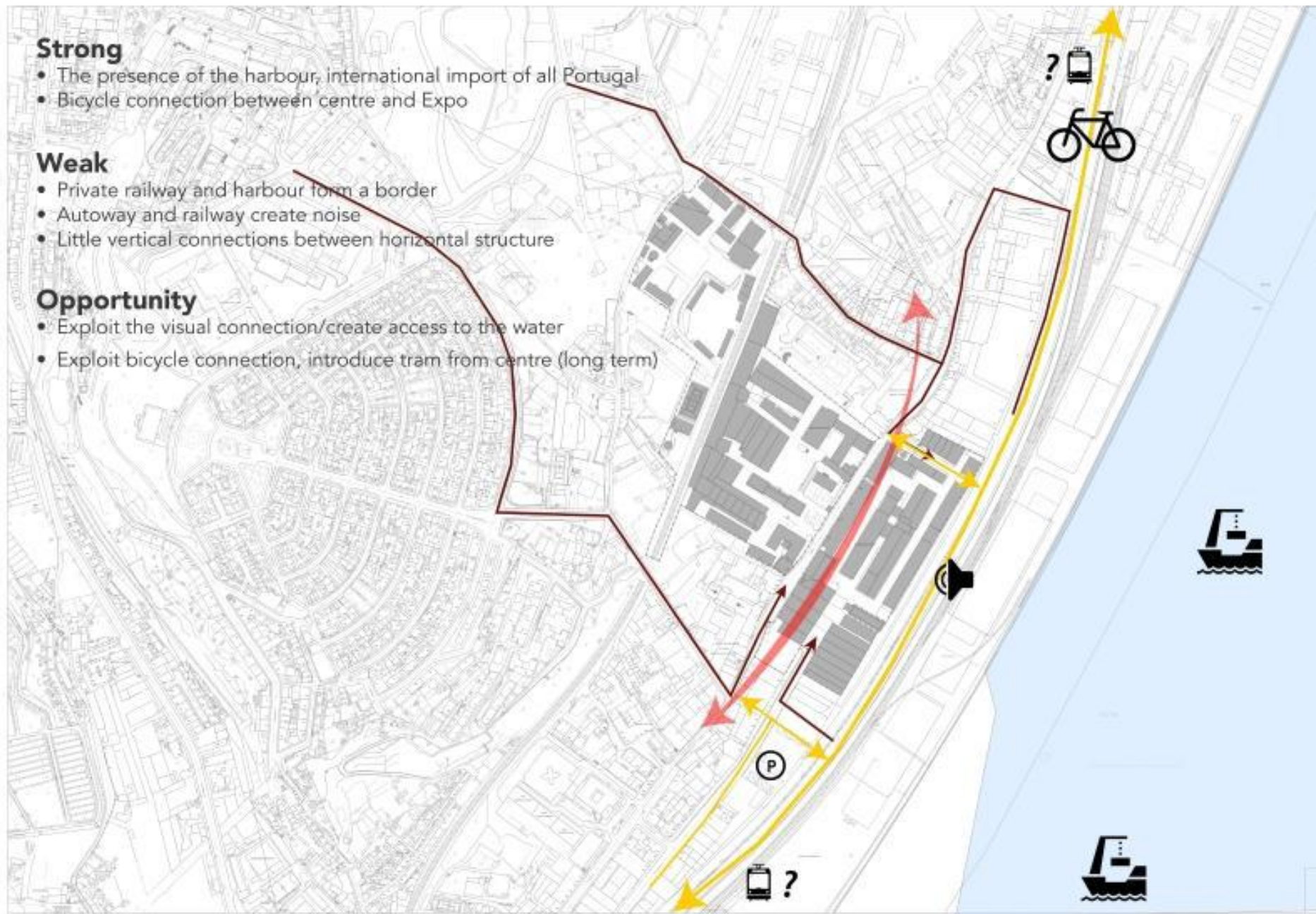
- The presence of the harbour, international import of all Portugal
- Bicycle connection between centre and Expo

## Weak

- Private railway and harbour form a border
- Autoway and railway create noise
- Little vertical connections between horizontal structure

## Opportunity

- Exploit the visual connection/create access to the water
- Exploit bicycle connection, introduce tram from centre (long term)





## Strong

- The presence of the harbour (working people)
- Starts-ups will be present in MMC from November 2016
- Diverse social context
- Bottom-up cultivation of land north from MMC

## Weak

- Low density environment
- Vacant lots and brown fields

## Opportunity

- Create a social centre; harbour context and start-ups
- Starts-ups can create activity on the ground-floor
- The cultivated land can supply local products





## Strong

- Visual connection with the water, the presence of the river
- Starts-ups will be present in MMC from November 2016
- Landmark Silo's, recognition point for environment
- Brown field next to MMC
- Bottom-up cultivation of land north from MMC
- Introvert character: safe and silence (feeling)
- Industrial heritage, MMC itself is a museum



## Weak

- Smell and noise from surrounding industry
- Lack of green spaces and leisure near MMC
- Little commerce near MMC
- Introvert character: little to no interaction with context



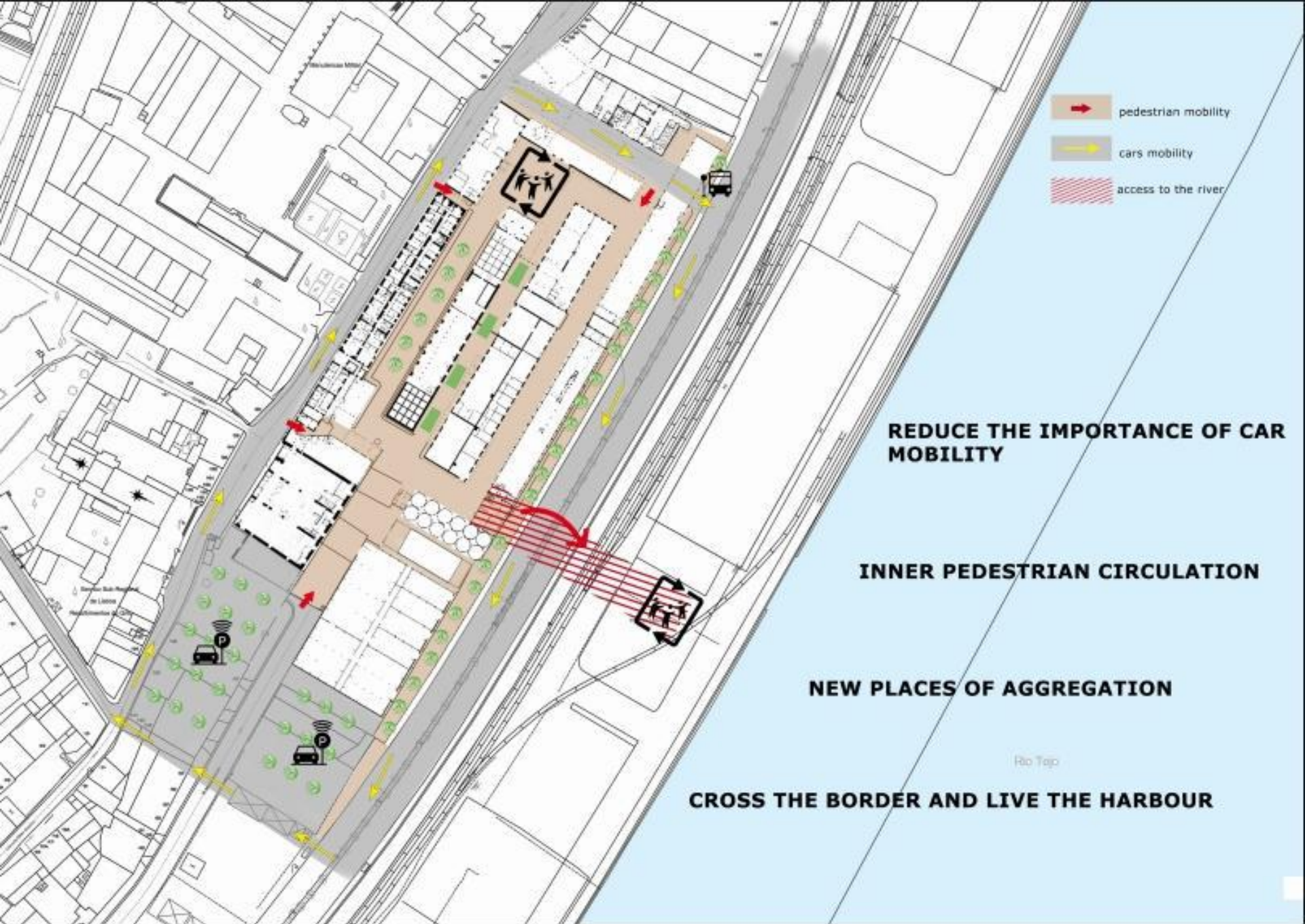
## Opportunity

- Exploit the visual connection/create access to the water
- Use the Silo's as symbol, landmark for the MMC complex
- Include brown field next to MMC
- Open the introvert character to improve the interaction with context
- Use industrial heritage as exposition/museum to attract and enhance
- Create new places for leisure, green areas and small retail











# DEMOLITION INTERVENTION



AUTOWORKSHOP

**Creation of new public  
and relational spaces**

**Remove toxic asbestos  
roof**

**SUPERMARKET (first block)**



**WAREHOUSE**

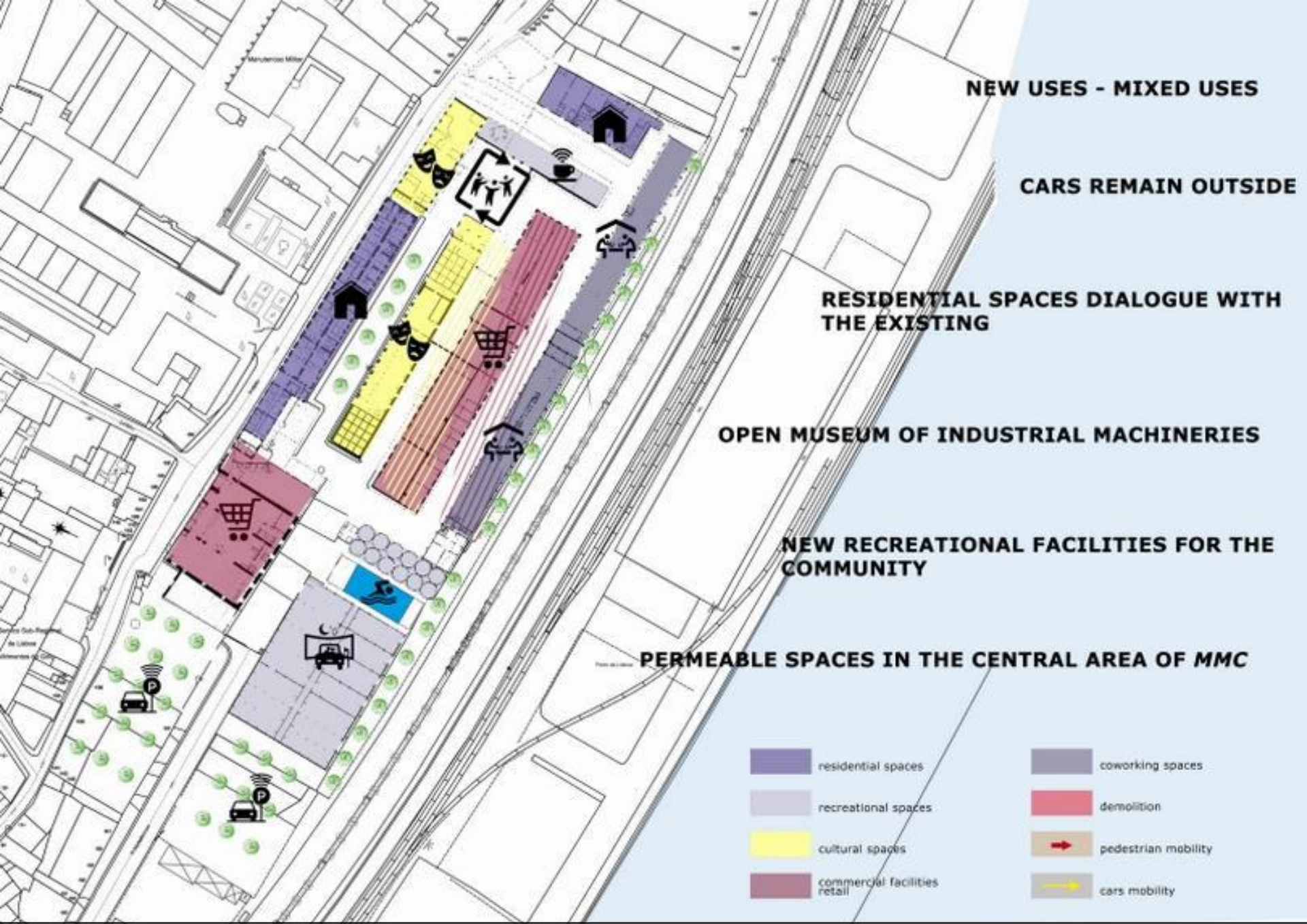


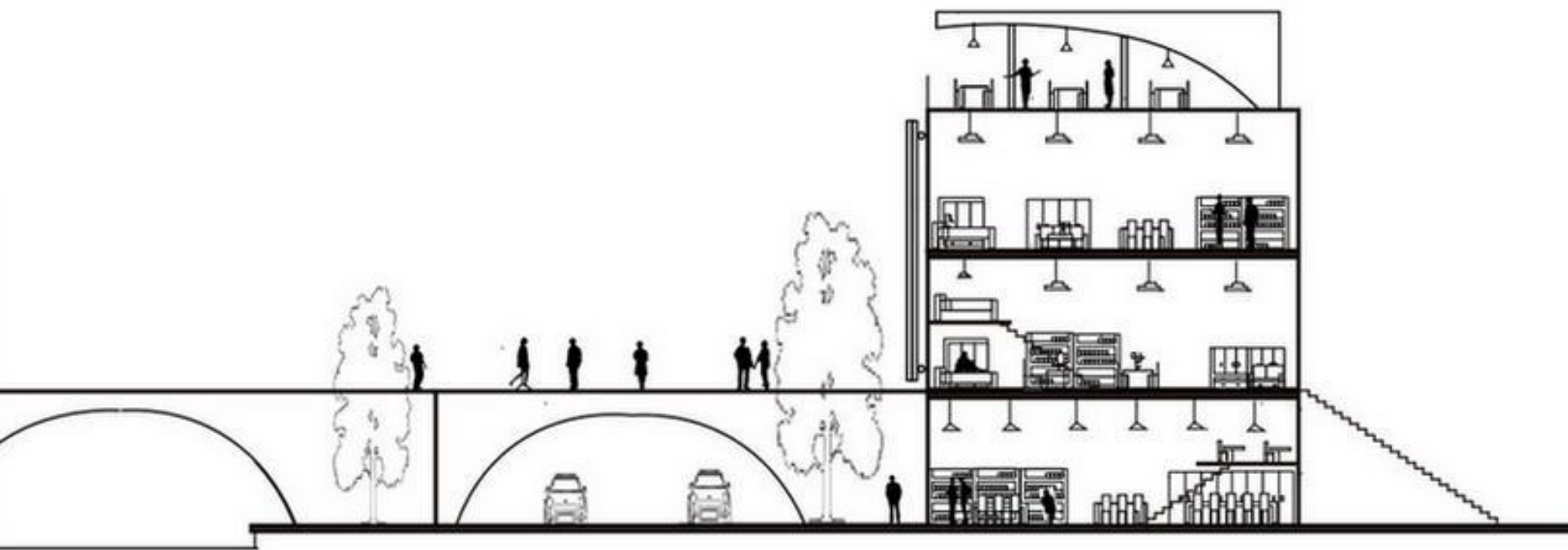
**FIRE DEPARTMENT**



Demolition







Section





Collage





**DAVERIO**  
 Mühlenbauanstalt und Maschinenfabrik  
 Spezial-Müllensortierungen Lieferung jeder Art Mühlenmaschinen  
**DAVERIO & CIE A.G.**  
 ZURICH



Vierwalzenstuhl „SUPERNOVO“

Wasserschleuse in der  
 am 10. September  
 1900 in Betrieb  
 genommen wurde

Industrial Heritage













Bread Factory





Conference Rooms





Pedestrian Area



Open-Air Art Space





Bread Factory





Indoor Art Space





Pasta Factory









Warehouses













Restaurant





Supermarket





How hot can you go?

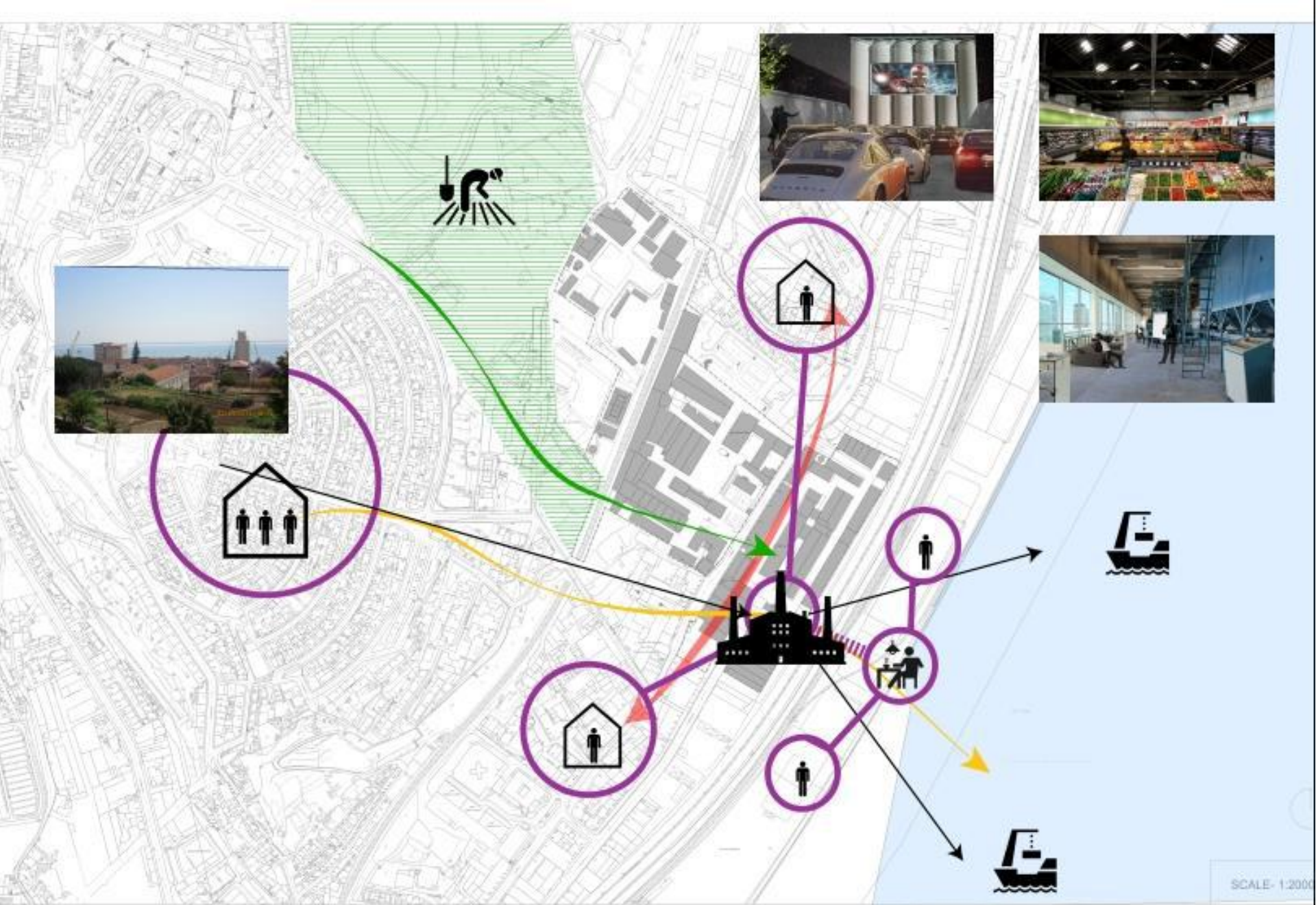
jalapeno	Long Green Chilli	Red Chilli	Finger Chilli	Thai Chilli	Bird's Eye Chilli	Scotch Bonnet
MILD + SWEET						
£1	£1	£1	£1	£1	£1	£1



fishmonger

Supermarket





Conclusion



